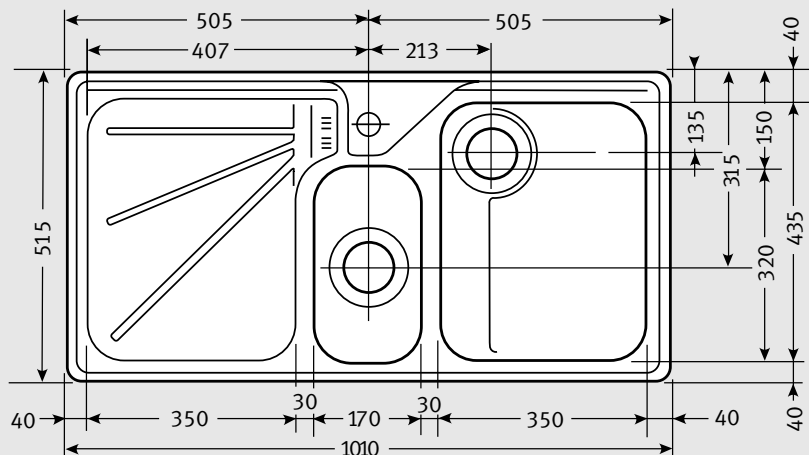
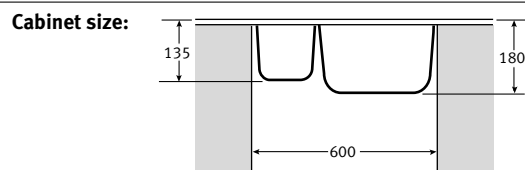


# ARG 654 Specifications

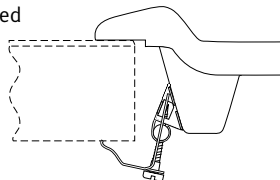
- **2 x 90mm Wastes with Basket Strainer Wastes.** Capable of adaptation to take Waste Disposal Unit
- **4 colours of bespoke accessories available**
- **Recessed drainer with dedicated overflow outlet**
- **Convenient horizontal overflow**
- **Large diagonal bowl dimension.** Extra large main and half bowl located at front rim of sink profile
- **Available as a Designer Value Pack**
- **Debris channel built into the main bowl**



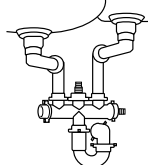
<b>Material:</b>	Fragranite fused silica/quartz composite
<b>Application:</b>	Inset
<b>Bowl size:</b>	350 x 435 x 180 170 x 320 x 135
<b>Drainer Format:</b>	Left or right hand drainer available
<b>Cut-out size:</b>	990 x 495
<b>Colour:</b>	White, Oatmeal, Champagne, Grey or Slate
<b>Seal:</b>	Mastic sealant
<b>Insulation:</b>	Integral
<b>Heat Resistance:</b>	Up to 280°C
<b>Earthing Point:</b>	Not applicable



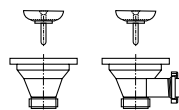
**Fixing Clips:** Attached



**Suggested Plumbing Kit:** 2 part

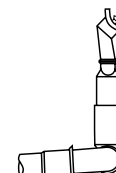


**Waste:** 1 x Lira 90mm Basket\*  
Strainer Waste with overflow  
1 x Lira 90mm Basket\*  
Strainer Waste



\*Zirconium option available

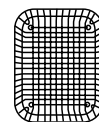
**Overflow\*:**



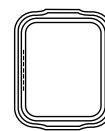
**Accessories available:**



**Chopping Board**  
Iroko  
Large



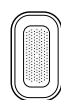
**Drainer Basket**  
Available in  
White, Almond,  
Brown or Black



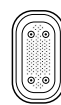
**Drainer Tray**  
Available in  
White, Almond,  
Brown or Black



**Drainer Tray**  
Stainless Steel



**Strainer Bowl**  
Available in  
White, Almond,  
Brown or Black



**Strainer Bowl**  
Stainless Steel

**Taps:** Any Franke tap can be utilised with this model\*.

\*Ceramic disc taps in certain installations or where there is a low head of water (below 3 metres) may not provide adequate flow rates. You are advised to check with your supplier.

**Guarantee:** Franke sinks are guaranteed for 25 years against manufacturing defect. Franke taps are guaranteed against defective materials and workmanship for 1 year in relation to coatings and finishes, and 5 years in relation to moving parts. Franke will replace (and where appropriate repair) defective sinks. In relation to taps, Franke will where appropriate provide replacement parts for your taps or replace your taps. Any associated or ancillary costs to be incurred by you as a result of replacement of Franke sinks and taps under this guarantee shall in all cases be previously approved by Franke UK Limited.

This guarantee is in addition to and does not affect your statutory rights.