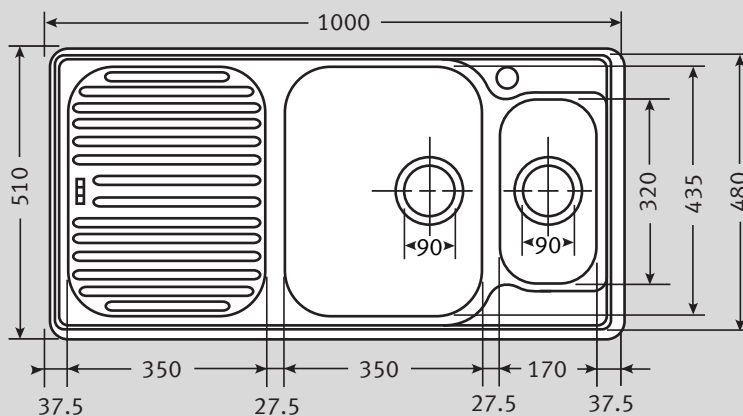
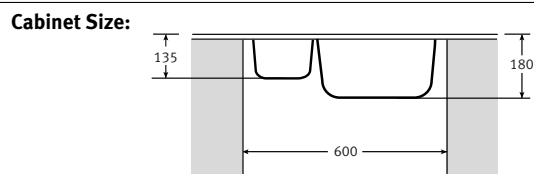


# Ariane ARX 661P Specifications

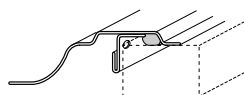
- **Unique Swiss Double-Edge profile and corner radii.** Sink lies completely flat on worktop and cloths will not snag on corners
- **2 x 90mm Wastes with Basket Strainer Wastes.** Capable of adaptation to take Waste Disposal Unit
- **Stainless Steel accessories available**
- **Large diagonal bowl dimension.** Extra large main and half bowl
- **Multi-fluted drainer ribs.**
- **Ideal working configuration.**



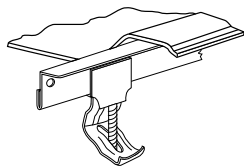
<b>Material:</b>	Stainless Steel
<b>Application:</b>	Inset
<b>Bowl Size:</b>	350 x 435 x 180 } Bowls welded to frame 170 x 320 x 135 }
<b>Drainer Format:</b>	Left or right handed drainer available
<b>Cut-out Size:</b>	984 x 494 (cr=20)
<b>Colour:</b>	Silk Finish Stainless Steel
<b>Seal:</b>	Factory Fitted Polyurethane Seal
<b>Insulation:</b>	Black pads for sound insulation
<b>Heat Resistance:</b>	Up to 300°C
<b>Earthing Point:</b>	Located at end of clip rail



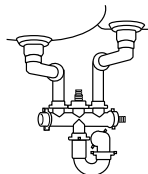
**Sink Profile:** Double Edge



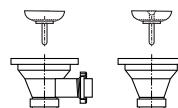
**Fixing Clips:** 'S' rail



**Suggested Plumbing Kit:** 2 part



**Waste:** 1 x Lira 90mm Basket Strainer Waste with overflow  
1 x Lira 90mm Basket Strainer Waste



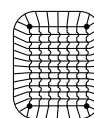
**Overflow:**



**Accessories Available:**



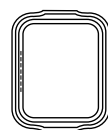
**Strainer Bowl**  
Available in White, Almond, Brown or Black



**Drainer Basket**  
Available in White, Almond, Brown or Black



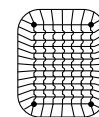
**Drainer Tray**  
Stainless Steel



**Drainer Tray**  
Available in White, Almond, Brown or Black



**Food Preparation Platter**  
Mahogany



**Drainer Basket**  
Stainless Steel



**Strainer Bowl**  
Stainless Steel

**Taps:** Any Franke tap can be utilised with this model\*.

\*Ceramic disc taps in certain installations or where there is a low head of water (below 4 metres) may not provide adequate flow rates. You are advised to check with your supplier.

Some taps may need bracing to avoid flexing of the sink ledge.

**Guarantee:** Franke sinks are guaranteed for 50 years against manufacturing defect. Franke taps are guaranteed against defective materials and workmanship for 1 year in relation to coatings and finishes, and 5 years in relation to moving parts. Franke will replace (and where appropriate repair) defective sinks. In relation to taps, Franke will where appropriate provide replacement parts for your taps or replace your taps. Any associated or ancillary costs to be incurred by you as a result of replacement of Franke sinks and taps under this guarantee shall in all cases be previously approved by Franke UK Limited.

This guarantee is in addition to and does not affect your statutory rights.